



Virginia Healthcare Workforce Briefs

Indicators from the Bureau of Labor Statistics'
Current Employment Statistics Survey
Series 2: Regional & Sectoral Employment

Series 2, Issue 144

March 2024

Inside this Brief:

Regional Employment	2
Regional Employment Growth	2
Subsector Employment	3
Subsector Employment Growth	4
Region Map	5
About the Data	6

Data in this report are not seasonally adjusted. Self-employed persons, including health professionals in private practice, are not included.

Highlights

- ◆ Data in this series are not seasonally adjusted and exhibit short-term volatility from fluctuations in holidays, weekends, weather and other seasonal factors. Estimates for the most recent month are preliminary.
- ◆ Virginia Health Care & Social Assistance (HC&SA) sector enjoyed broad-based employment growth across the entire state in February. The Rest of Virginia experienced the largest increase in HC&SA employment in February with the creation of 2,000 new jobs during the month. At the same time, Hampton Roads' HC&SA sector produced 1,100 new jobs, while Northern Virginia increased HC&SA employment by 800. Finally, Richmond's HC&SA sector added 600 new jobs in February.
- ◆ Every HC&SA subsector in Virginia enjoyed positive employment growth in February. Ambulatory Health Care Services produced the largest employment gain in the state thanks to the creation of 2,000 new jobs in February. Meanwhile, both Nursing & Residential Care Facilities and Hospitals increased employment by 900 during the month. As for Social Assistance, this HC&SA subsector saw employment increase by 700 in February.

Data in Brief

Not Seasonally Adjusted*	Employment, in Thousands				Growth Rate, Annualized		
	Feb. 2023	Nov. 2023	Jan. 2024	Feb. 2024	12 Month	3 Month	1 Month
Virginia							
Total Nonfarm	4,125.2	4,223.1	4,147.7	4,182.0	1.4%	-3.8%	10.4%
Health Care & Social Assistance	474.8	490.8	489.3	493.8	4.0%	2.5%	11.6%
Hampton Roads							
Total Nonfarm	795.6	817.8	804.6	811.4	2.0%	-3.1%	10.6%
Health Care & Social Assistance	97.5	100.3	100.6	101.7	4.3%	5.7%	13.9%
Northern Virginia							
Total Nonfarm	1,555.3	1,589.7	1,560.7	1,568.7	0.9%	-5.2%	6.3%
Health Care & Social Assistance	152.6	159.1	158.9	159.7	4.7%	1.5%	6.2%
Richmond							
Total Nonfarm	705.8	719.9	710.6	714.3	1.2%	-3.1%	6.4%
Health Care & Social Assistance	88.5	90.9	91.0	91.6	3.5%	3.1%	8.2%
Rest of Virginia							
Total Nonfarm	1,068.5	1,095.7	1,071.8	1,087.6	1.8%	-2.9%	19.2%
Health Care & Social Assistance	136.2	140.5	138.8	140.8	3.4%	0.9%	18.7%

Preliminary estimates are italicized

* Seasonally adjusted data are adjusted by the Bureau of Labor Statistics to account for weather and other seasonal changes. Since the U.S. Bureau of Labor Statistics does not provide seasonally adjusted data at this level, this series uses non-seasonally adjusted data exclusively. Seasonal variation may account for some of the variation in time series data. When comparing data in this series to other HWDC series or other publications, it is important to note whether the data reported have been seasonally adjusted.

Regional HC&SA Employment Growth, Level

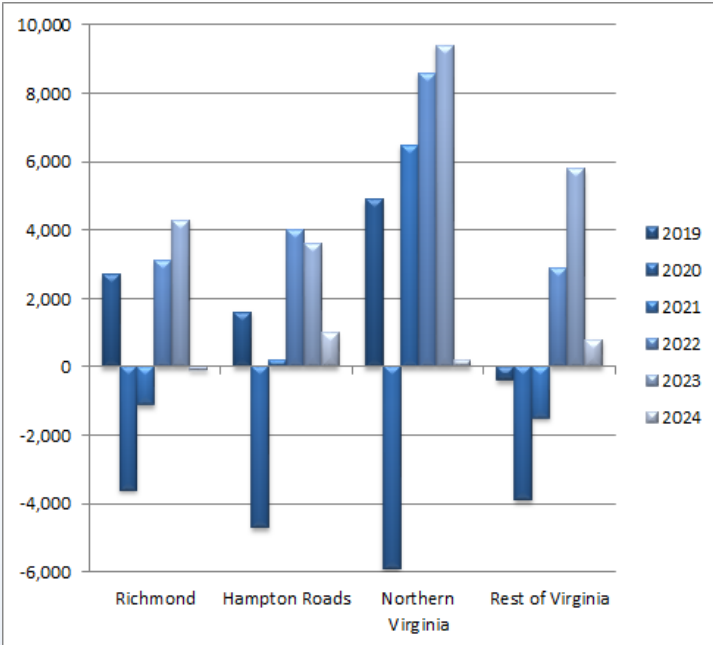


Figure 1: Annual & YTD Change in HC&SA Regional Employment (Not Seasonally Adjusted, Full-Year Change for 2019-2023, Year-to-Date Change for 2024).

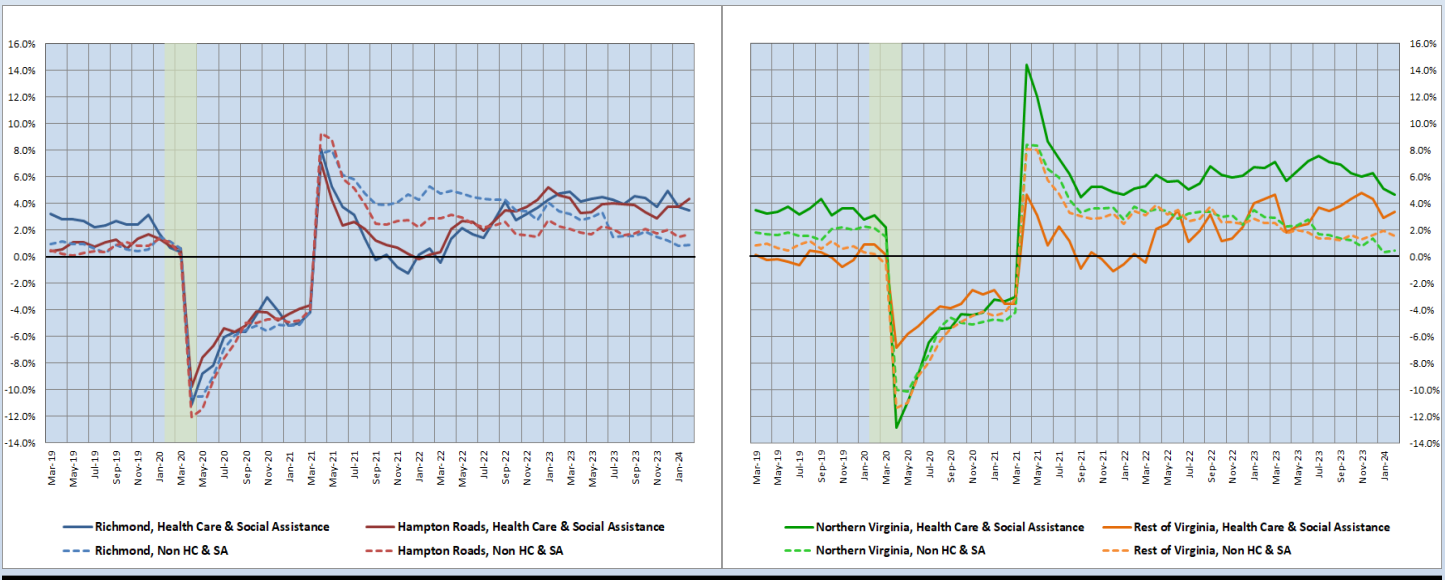
According to the preliminary data released on Friday, March 22, 2024, by the U.S. Department of Labor, Bureau of Labor Statistics, Virginia’s Health Care & Social Assistance (HC&SA) sector, after having experienced job losses in every region of the state in January, rebounded strongly in February with broad-based employment growth across all four regions during the month.

The Rest of Virginia experienced the largest HC&SA employment gain in February with the creation of 2,000 new jobs during the month, which translates into a 18.7% growth rate. At the same time, Hampton Roads’ HC&SA sector added 1,100 jobs, which represents a one-month annualized growth rate of 13.9%. For both the Rest of Virginia and Hampton Roads, February’s HC&SA job gain represents their largest monthly employment increase in nearly two years. Meanwhile, Northern Virginia created 800 HC&SA jobs in February, which translates into a 6.2% annualized growth rate. As for Richmond, its HC&SA sector increased employment at a 8.2% annualized rate after adding 600 new jobs in February.

Year-Over-Year Regional Employment Growth

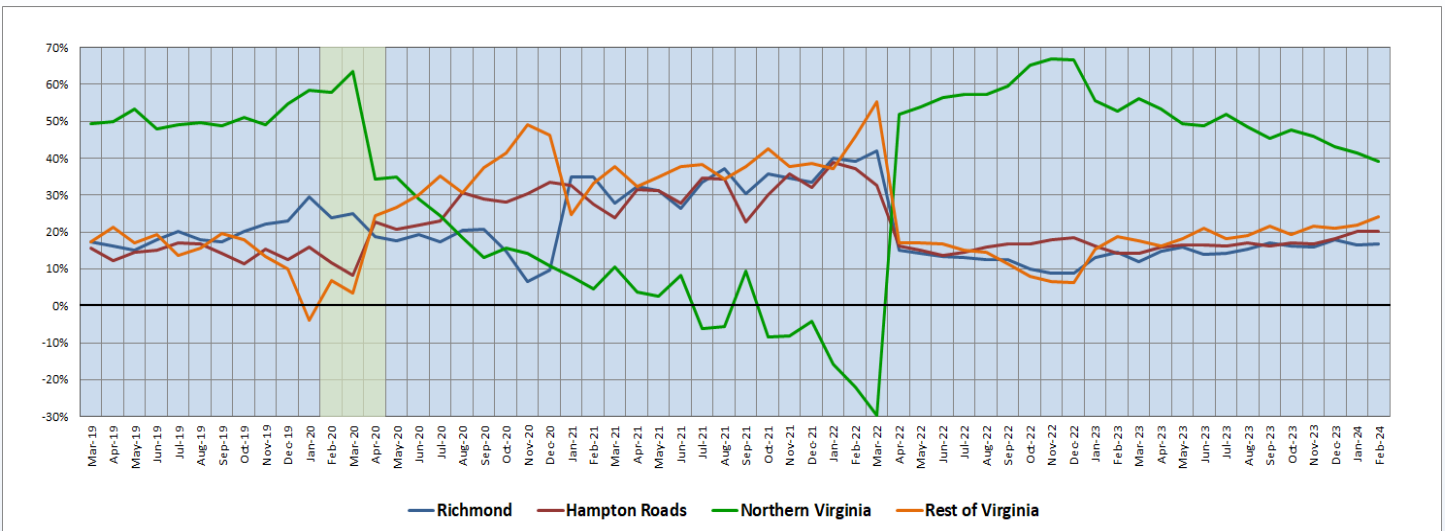
Although Northern Virginia’s year-over-year HC&SA employment growth rate fell from 5.09% to 4.65% in February, thereby dropping below 5% for the first time in more than two years, it still remains the highest among Virginia’s four regions. However, Hampton Roads’ HC&SA sector has closed this gap considerably thanks to an increase to its own year-over-year employment growth rate from 3.71% to 4.31%, its highest value in nearly one year. The Rest of Virginia also experienced an increase to its year-over-year HC&SA employment growth rate from 2.89% to 3.38%. On the other hand, Richmond’s HC&SA sector saw its own year-over-year employment growth rate fall from 3.76% to 3.50%.

Figure 2: Year-Over-Year Employment Growth (Not Seasonally Adjusted).



Regional Share of 24-Month Employment Growth

Figure 3: Regional Share of Previous 24-Month Employment Growth in Virginia’s HC&SA Sector (Not Seasonally Adjusted).



In February, Northern Virginia’s 24-month HC&SA employment growth share fell from 41.35% to 39.15%. While Northern Virginia’s 24-month HC&SA employment growth share remains the highest in the state among Virginia’s four regions, it did fall below 40% for the first time in nearly two years during the month. On the other hand, the Rest of Virginia saw its own 24-month HC&SA employment growth reach its highest value in nearly two years after increasing from 21.88% to 24.06% in February. Meanwhile, Hampton Roads’ 24-month HC&SA employment growth share dipped slightly in February from 20.19% to 20.05%. As for Richmond’s HC&SA sector, its 24-month employment growth share experienced a modest increase from 16.59% to 16.75% during the month.

HC&SA Subsector Employment Growth, Level

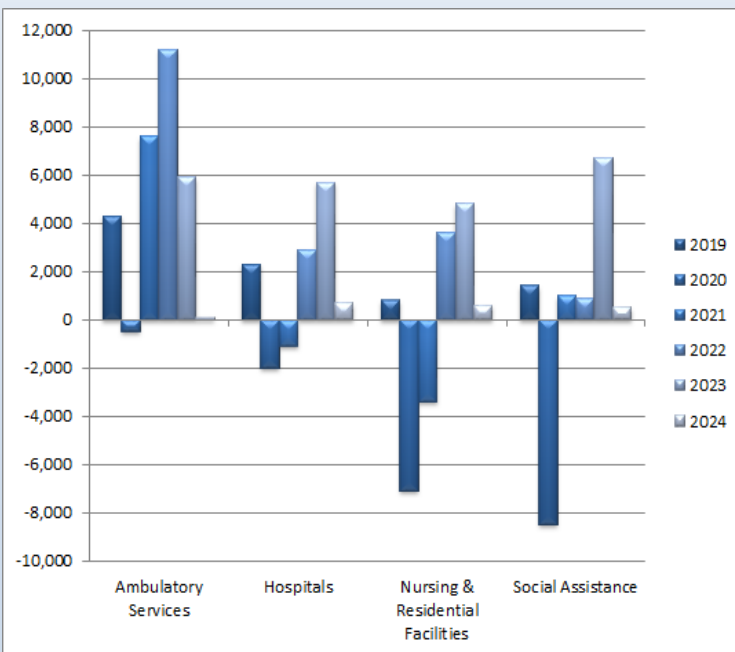


Figure 4: Annual & YTD Change in HC&SA Subsector Employment (Not Seasonally Adjusted, Full-Year Change for 2019-2023, Year-to-Date Change for 2024).

In January, all four of Virginia’s HC&SA subsectors experienced a decline in employment, but these job losses were recovered in February thanks to across-the-board employment growth in all of these subsectors. One month after experiencing its largest monthly job loss in nearly four years, Ambulatory Health Care Services recouped all of these losses in February thanks to the creation of 2,000 new jobs during the month. In fact, Ambulatory Health Care Services have not created this many jobs in a single month since October 2022.

Meanwhile, Virginia’s three other HC&SA subsectors also enjoyed strong employment gains during the month. Nursing & Residential Care Facilities created 900 new jobs in February, which represents its largest one-month employment gain since last June. Hospitals also increased employment by 900 during the month. Even Social Assistance, which saw the smallest employment gain among Virginia’s four HC&SA subsectors, experienced strong growth thanks to the creation of 700 new jobs in February.

Distribution of Growth by Subsector

Not Seasonally Adjusted	Employment, in Thousands				Growth Rate, Annualized		
	Feb. 2023	Nov. 2023	Jan. 2024	Feb. 2024	12 Month	3 Month	1 Month
Virginia							
Health Care & Social Assistance	474.8	490.8	489.3	493.8	4.0%	2.5%	11.6%
<i>Ambulatory Health Care Services</i>	211.7	218.6	215.3	217.3	2.6%	-2.4%	11.7%
<i>Hospitals</i>	109.2	113.3	113.7	114.6	4.9%	4.7%	9.9%
<i>Nursing & Residential Care Facilities</i>	72.8	76.1	76.4	77.3	6.2%	6.5%	15.1%
<i>Social Assistance</i>	81.1	82.8	83.9	84.6	4.3%	9.0%	10.5%
Hampton Roads							
Health Care & Social Assistance	97.5	100.3	100.6	101.7	4.3%	5.7%	13.9%
<i>Hospitals</i>	21.9	22.6	22.7	23.0	5.0%	7.3%	17.1%
Northern Virginia							
Health Care & Social Assistance	152.6	159.1	158.9	159.7	4.7%	1.5%	6.2%
<i>Ambulatory Health Care Services</i>	79.1	81.9	81.3	81.9	3.5%	0.0%	9.2%
<i>Hospitals</i>	28.9	30.6	30.8	31.0	7.3%	5.3%	8.1%

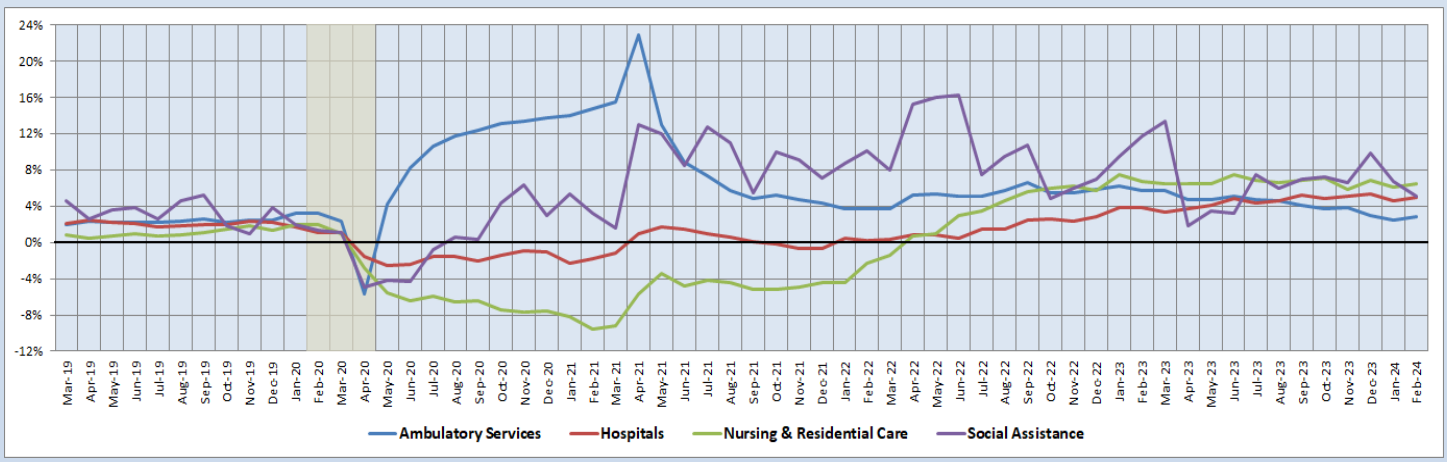
Preliminary estimates are italicized

Three of Virginia’s four HC&SA subsectors enjoyed double-digit annualized employment growth rates in February. This job growth was particularly notable in Nursing & Residential Care Facilities, which increased employment at a 15.1% annualized rate during the month. Nursing & Residential Care Facilities are also enjoying the fastest long-term job growth in the state thanks to its 12-month employment growth rate of 6.2%. Meanwhile, Ambulatory Health Care Services and Social Assistance enjoyed one-month annualized employment growth rate of 11.7% and 10.5%, respectively, in February. Furthermore, Social Assistance’s three-month annualized employment growth rate of 9.0% is currently the highest in the state.

12-Month Average Employment Growth by Subsector

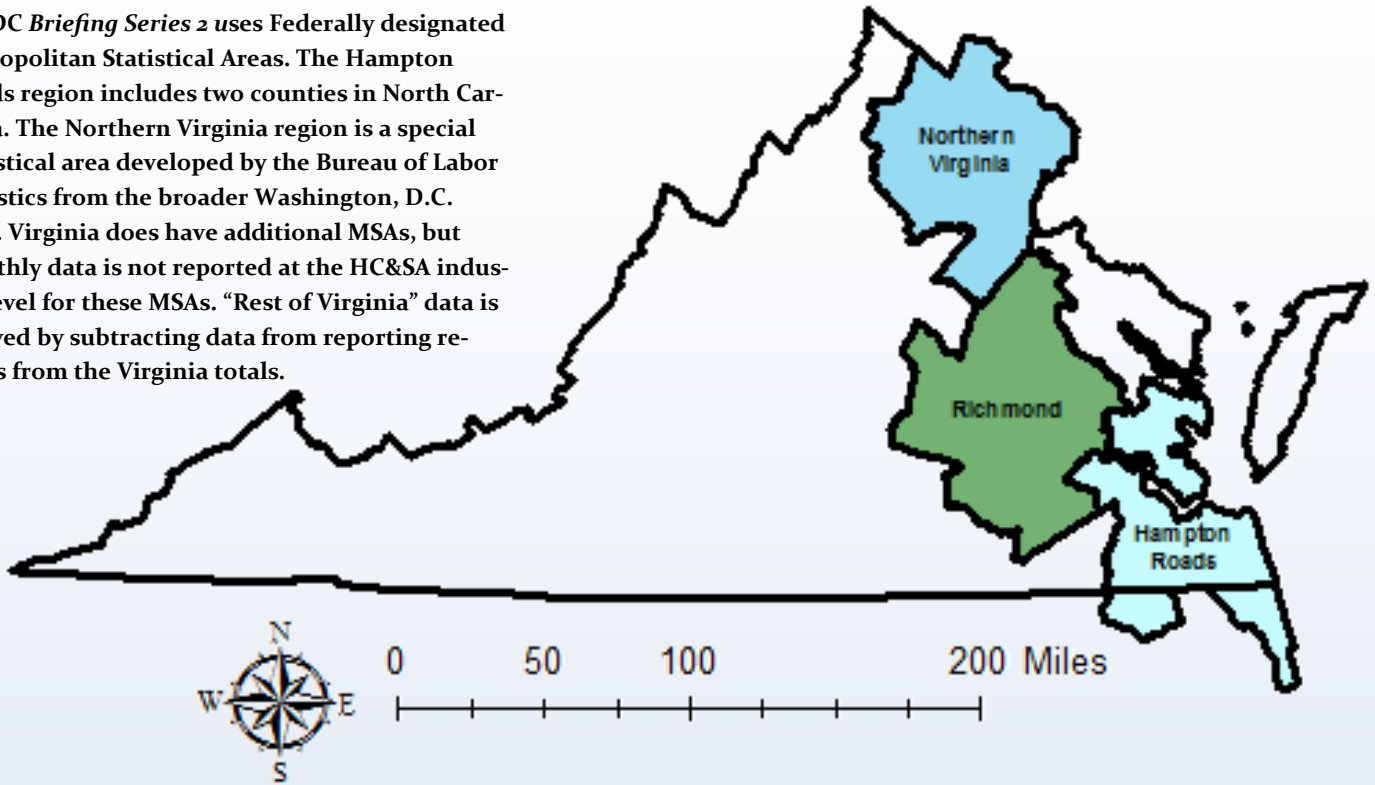
In February, Nursing & Residential Care Facilities saw their 12-month employment growth rate moving average increase from 6.07% to 6.45%. With this gain, the 12-month employment growth rate moving average for Nursing & Residential Care Facilities has overtaken the comparable moving average for Social Assistance, which fell from 6.76% to 5.06% in February. Thanks to this change, Nursing & Residential Care Facilities now has the highest moving average in the state for the first time since last August. Meanwhile, Hospitals saw their 12-month employment growth rate moving average increase from 4.56% to 5.01%, and the comparable moving average for Ambulatory Health Care Services rose from 2.47% to 2.86%.

Figure 5: 12-Month Moving Average, HC&SA Subsector Employment Growth Rate (Not Seasonally Adjusted).



Region Map

HWDC *Briefing Series 2* uses Federally designated Metropolitan Statistical Areas. The Hampton Roads region includes two counties in North Carolina. The Northern Virginia region is a special statistical area developed by the Bureau of Labor Statistics from the broader Washington, D.C. MSA. Virginia does have additional MSAs, but monthly data is not reported at the HC&SA industry level for these MSAs. “Rest of Virginia” data is derived by subtracting data from reporting regions from the Virginia totals.



Region Detail

Northern Virginia		Richmond		Hampton Roads	
<i>Northern Virginia, VA (Non-standard CES Area 94783)</i>		<i>Richmond, VA (MSA 40060)</i>		<i>Virginia Beach-Norfolk-Newport News, VA-NC (MSA 47260)</i>	
Counties:	Cities:	Counties:	Cities:	Counties:	Cities:
Arlington	Alexandria	Amelia	Colonial Heights	Gloucester	Chesapeake
Clarke	Fairfax	Caroline	Hopewell	Isle of Wight	Hampton
Culpeper	Falls Church	Charles City	Petersburg	James City	Newport News
Fairfax	Fredericksburg	Chesterfield	Richmond	Mathews	Norfolk
Fauquier	Manassas	Dinwiddie		Surry	Poquoson
Loudoun	Manassas Park	Goochland		York	Portsmouth
Prince William		Hanover			Suffolk
Rappahannock		Henrico		<i>Currituck, NC</i>	Virginia Beach
Spotsylvania		King William		<i>Gates, NC</i>	Williamsburg
Stafford		New Kent			
Warren		Powhatan			
		Prince George			
		Sussex			

Healthcare Workforce
Data Center

Perimeter Center
9960 Mayland Drive, Suite 300
Henrico, VA 23233-1463

Phone: (804) 597-4213
Fax: (804) 527-4434
E-mail: hwdc@dhp.virginia.gov
Website: www.dhp.virginia.gov/PublicResources/HealthcareWorkforceDataCenter

HWDC Staff:

Yetty Shobo, PhD <i>Director</i>	Barbara Hodgdon, PhD <i>Deputy Director</i>
Rajana Siva, MBA <i>Data Analyst</i>	Christopher Coyle, BA <i>Research Assistant</i>

Follow us on. . .

Tumblr: <http://vahwdc.tumblr.com/>

About the Data

Data in this report are from the U.S. Department of Labor, Bureau of Labor Statistics' Current Employment Statistics program. The CES program surveys about 143,000 businesses and government agencies monthly. Unless otherwise noted, this series uses data that are not seasonally adjusted. Seasonal variations related to weather, holidays, weekends, seasons and other predictable variations are apparent in the data. Short-term changes may be related to seasonal changes rather than underlying trends. Data from recent months are preliminary and subject to revision in future releases from the CES. Revisions will be reported in future editions of this series. Unless otherwise noted, the CES data presented in this series:

Includes:

- ◆ Data on employed individuals drawing a paycheck (payroll employees).
- ◆ All employees, regardless of role, occupation or hours worked.
- ◆ HC&SA employees in the private sector only.
- ◆ Persons employed by health professionals in private practice.
- ◆ Both government and private sector workers in nonfarm employment data.

Does not include:

- ◆ Self-employed workers or volunteers, including health professionals in private practice.
- ◆ HC&SA employees in the public sector (These are counted as government workers in monthly reports).
- ◆ Information on hours worked or the quality of employment.
- ◆ Government workers in HC&SA level data (Government workers, regardless of occupation and role, are classified as public sector employees).

The Department of Health Professions' Healthcare Workforce Data Center works to improve the data collection and measurement of Virginia's healthcare workforce through regular assessment of workforce supply and demand issues among the 80 professions and 350,000 practitioners licensed in Virginia by the DHP.

The HWDC collects data on Virginia's licensed health professionals through surveys completed during the online license renewal and application process. Survey results and data may be accessed on our website: www.dhp.virginia.gov/PublicResources/HealthcareWorkforceDataCenter/.

The HWDC also provides a series of Virginia Healthcare Workforce Briefs based on data collected by the U.S. Department of Labor's Bureau of Labor Statistics and the U.S. Department of Commerce's Bureau of Economic Analysis.

Virginia Healthcare Workforce Briefs:

Series 1: State & National Employment (Monthly)

Series 2: Virginia Regional & Sectoral Employment (Monthly)

Series 3: Income & Compensation (Quarterly)